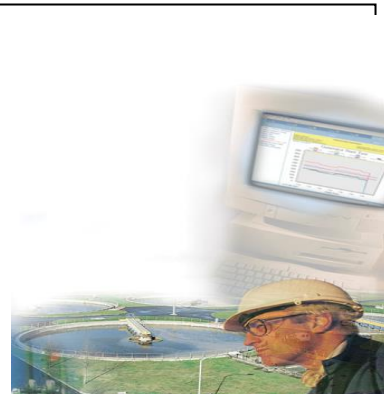
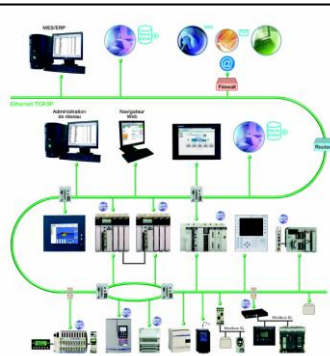




Automation Horizons
أفاق التحكم
Automation Solutions Builders



Company Profile

Schneider
Electric

Alliance
System Integrator Partner Programs

1.	INTRODUCTION	3
2.	OUR MISSION	3
3.	AUTOMATION HORIZONS TRACK OF EXCELLENCE	3
4.	OUR TECHNICAL CAPACITY AND CAPABILITIES	3
5.	AREAS OF EXPERTISE.....	4
6.	SERVICES PROVIDED:.....	4
7.	OUR SOLUTIONS	4
7.1.	CENTRAL CONTROL AND MONITORING SYSTEM (CCMS)	5
7.2.	POWER MANAGEMENT SYSTEM.....	7
7.3.	WWW (SOLUTIONS FOR WATER & WASTE WATER).....	10
7.4.	TELEMETRY SYSTEMS.....	16
7.5.	BILLING SYSTEM	17
8.	MAJOR PROJECTS LIST.....	21
9.	ORGANIZATION CHART.....	33
10.	SCHNEIDER ALLIANCE CERTIFICATES.....	35
11.	CHAMBER OF COMMERCE REGISTER.....	37
12.	ZAKAT CERTIFICATE	38

1. INTRODUCTION

Automation Horizons is an Authorized System Integrator of Schneider Electric Saudi Arabia. Automation Horizons is a leading firm in Automation and control Systems specialized in SCADA systems, PLCs, HMI & variable speed drives.

Automation Horizons, is a multi-discipline engineering company with a staff of professional and well experienced Engineers, designers, and draftsmen.

We are one of the few companies in Saudi Arabia that has the Capabilities and the Technical Know-How to undertake major automation projects in different fields with expertise in areas such as Process Control, SCADA & Data Acquisition; Central Control and Monitoring System (CCMS), Power Management Systems (PMS), HMI, PLCs, Industrial networks and Motion Control;

Automation Horizons can provide its customers with solutions that include the designing, engineering, equipment supply retrofitting, installation, start-up and commissioning, and after sales services. The experience we provide will result in cost effective solutions, reduced down time and total asset protection.

2. OUR MISSION

To provide quality products and services with complete customer satisfaction. We are committed to offering the very best in engineering principles and practices to deliver state-of-the-art technology with safety, performance and efficiency.

3. AUTOMATION HORIZONS TRACK OF EXCELLENCE

Automation Horizons has already developed a remarkable project track record within a very short time in Makkah, Riyadh, Yanbu, Jeddah and in other places in the Kingdom. We have specialized, trained and experienced professionals who are locally available for project activities and for our client's call-up services reaching them within hours.

4. OUR TECHNICAL CAPACITY AND CAPABILITIES

AUTOMATION HORIZONS has taken very important steps to entrench and consolidate higher operating efficiency of the technical and engineering aspects. We had initiated the establishment of a technical and engineering staff able to handle sophisticated systems; with the ability to design comprehensive and integrated solutions. The company selected its staff with great precision, and has embarked on attracting qualified engineers with high-level of experience in their areas of specialization, and provide them with up-to-date knowledge and training on the new technologies, to guarantee the continuity of the perfect services that the original group provided to their customers.

In addition, our company has established close working ties with several major international companies and highly experienced professionals and consultants, thus providing a basic standard of expertise range of functional capabilities that we provided to various customers.

The engineering team working in our company is fully aware of the warrant need to transfer the current classic dummy construction logic to the new millennium logic of (Intelligent Automation).

5. AREAS OF EXPERTISE

- Control Systems
- Startup & commissioning Assistance
- Application Software Development
- PLC and SCADA Programming
- Operator, Maintenance
- Engineering Training
- Remote maintenance support
- Wireless Communication
- System Upgrade and retrofitting

6. SERVICES PROVIDED:

We are providing Industrial Automation to various industries like, Power Process, Water, Food, Packaging etc. We are geared to provide total turnkey support from the stage of requirement analysis, system engineering, software development, installation and commissioning and onsite training to maintain the above products.

Activities

- **PROJECT MANAGEMENT**
To ensure that: schedule, cost and quality objectives are met. We work closely with the client to clearly define the project scope, schedule, cost and execution details.
- **DESIGN STUDIES**
Including needs analysis, system life plan studies, and alternative technology evaluation
- **BASIC ENGINEERING**
Including bid specifications, bid evaluations.
- **SYSTEM INTEGRATION**
Including programming, configuration, multi-vendor system integration, testing.
- **COMMISSIONING**
Including loop checks, configuration verification, control verification
- **TENDER**
Including analyzing of customer requirements and provide a 'best fit' solution utilizing the Schneider Range including, but not restricted to : PLC's, Drives, Detection, Identification, MMI, SCADA, Intelligent switchgear and Intelligent MCC"s. preparing the tender documents and site survey if necessary.

7. OUR SOLUTIONS

- CCMS (Central Control & Monitoring Systems)
- PMS (Power Management Systems)
- WWW SCADA (Water & Waste Water SCADA systems)
- Telemetry Systems
- BILLING SYSTEMS
- Substation Automation

7.1. CENTRAL CONTROL AND MONITORING SYSTEM (CCMS)

The CCMS system relates to:

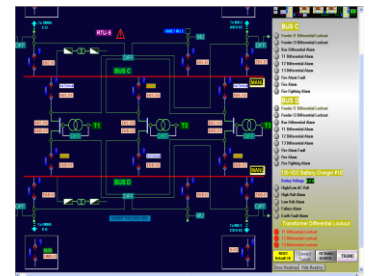
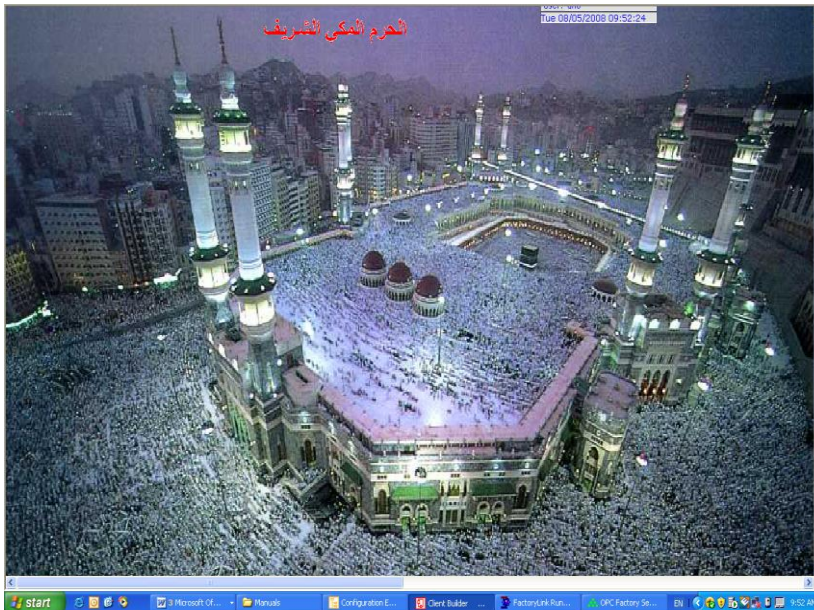
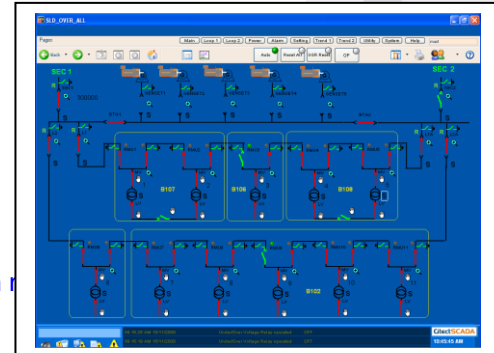
The electrical power distribution (MV switch-gear, electrical substations)

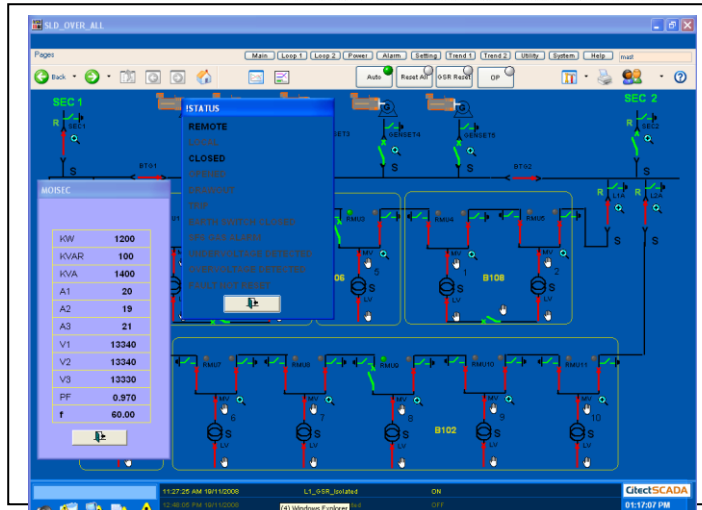
Main supply (SEC)

Generators

The main functions of the CCMS are:

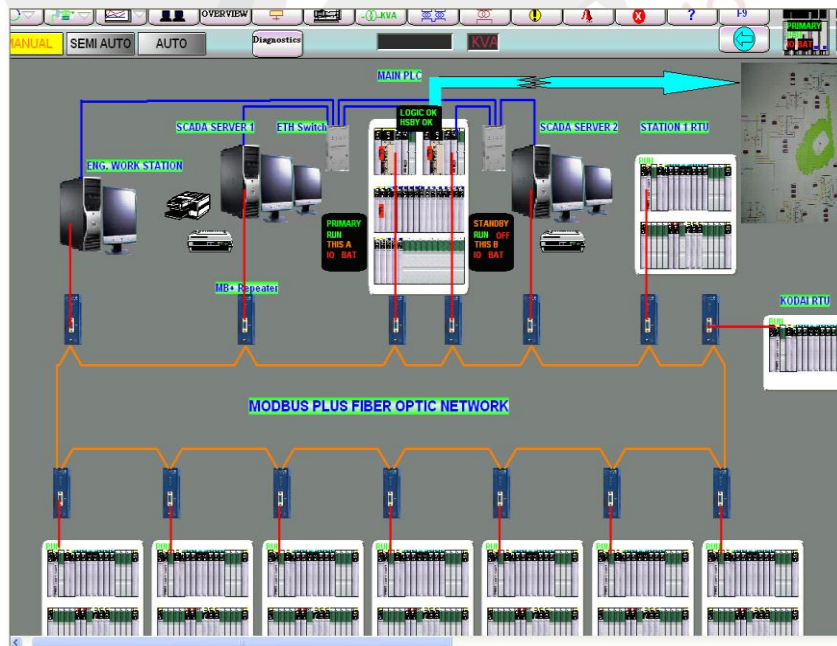
- To inform the operator of the status of the electrical installation
- To enable the operator to control state of the installation
- To reconfigure and maintain, by automatic controls, the distribution
- To detect and isolate network faults
- MV loops open point management
- To reconfigure the loop in case of phase earth fault
- To perform load shedding / restoring
- Switching between the main supply and standby generators.
- Switching and loop re-configuration between main supply feeders





- MV equipment status
- MV equipment System manual and automatic control
- Alarm management
- Measurement
- Trends
- Data logging
- Reporting

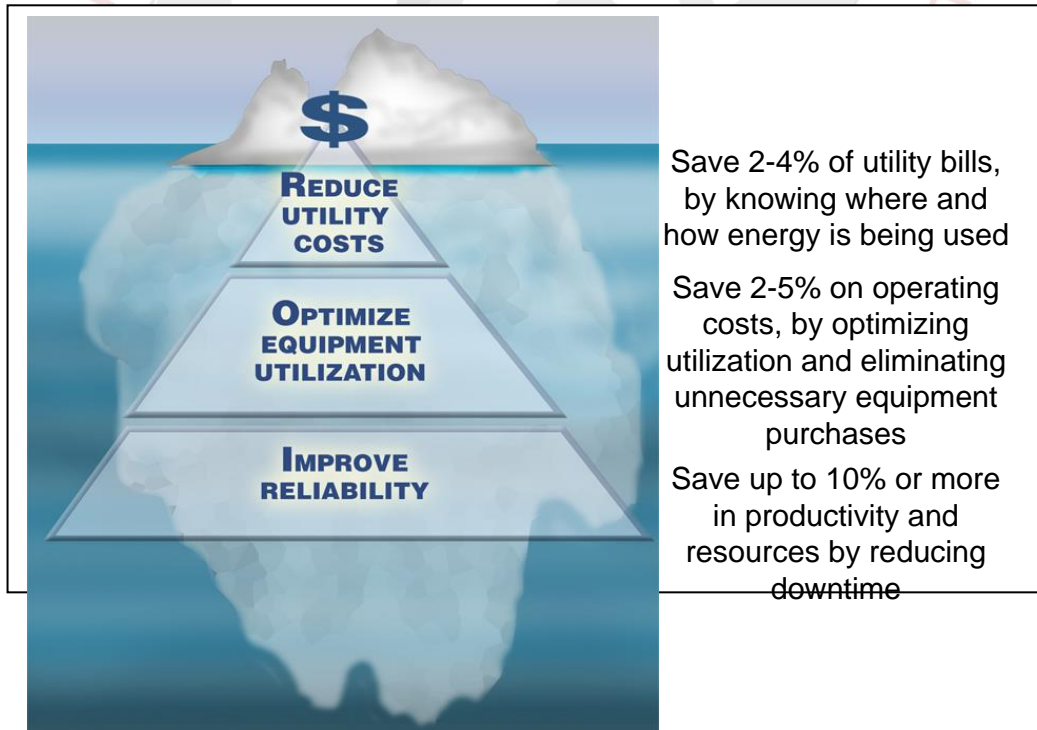
The automation system consists of
 PC based SCADA server(s) in standalone or redundant configuration
 Main PLC, standalone or redundant configuration, responsible for the central control
 RTUs (Remote Terminal Units) installed in the substations responsible for data acquisition and local control
 Industrial communication network to interconnect all the system devices.
 All equipment are supported by UPS to ensure power continuity in case of power failure and during MV network re-configuration.



7.2. POWER MANAGEMENT SYSTEM

help to control the cost, quality and reliability of the utilities

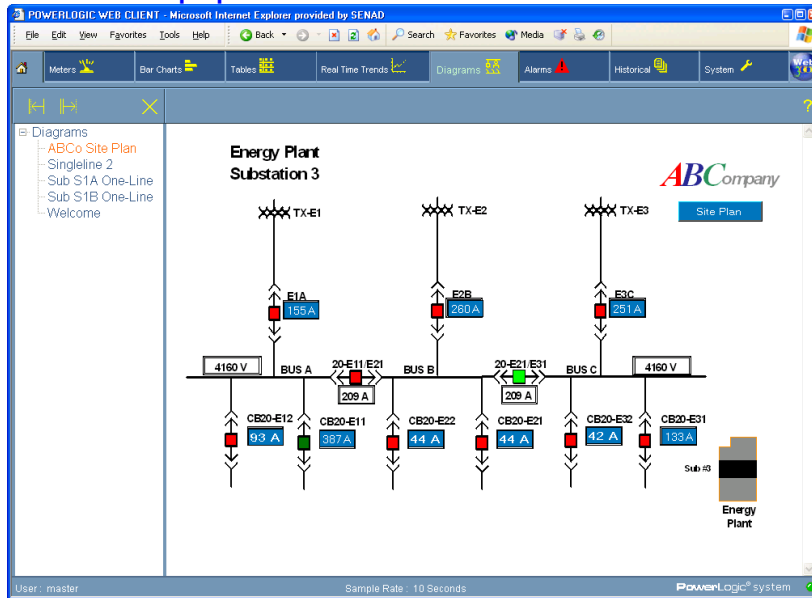
- The PMS systems has delivered a proven return and has helped customers realize significant advantages in productivity and *profitability*.
- Examining and changing the way you manage electricity will save money.
- Savings can be found in the form of:
 - ☐ Direct utility expenses
 - ☐ Equipment purchases
 - ☐ Maintenance & safety budgets
 - ☐ Downtime reduction



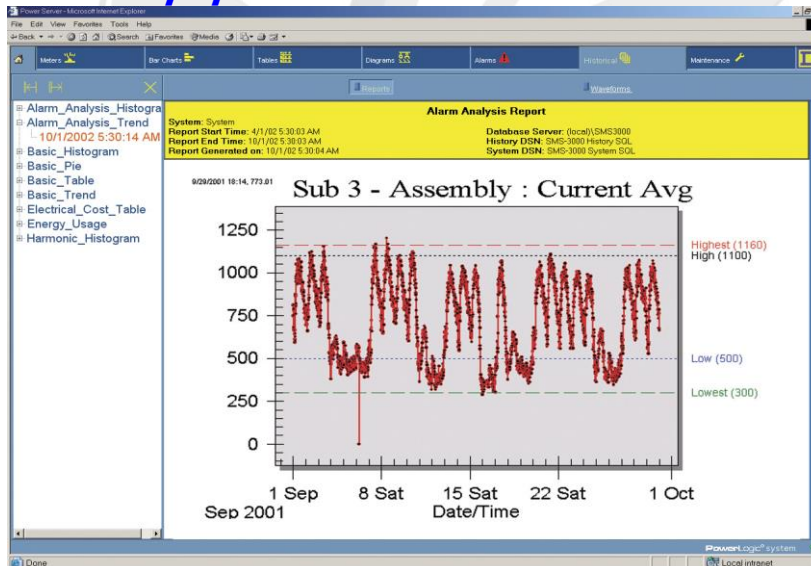
The challenges of the times towards the survival of the business and its continued success. That each organization or company should plan to reduce production costs or operating expenses. It is known that higher operating expenses are power consumption. So every organization has to think about how to monitor and control your power.

Load management and alarm analyses can be different functions of our Power management system

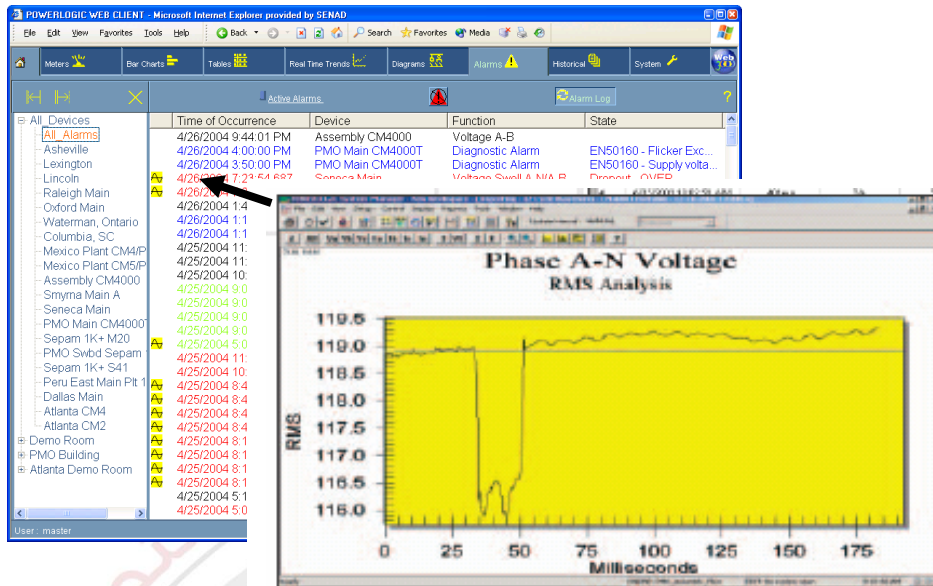
Monitor Equipment assets



Extend Equipment Life

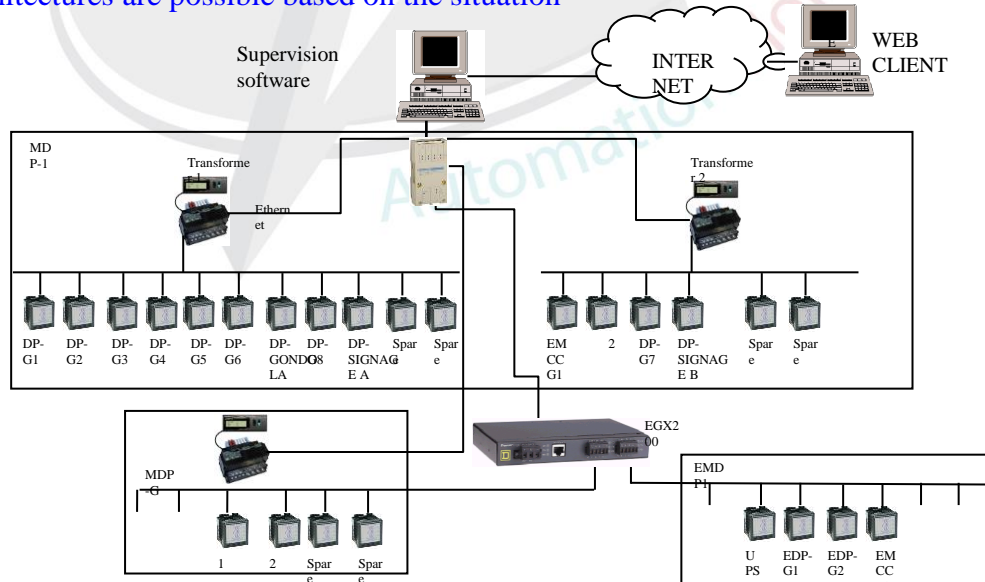


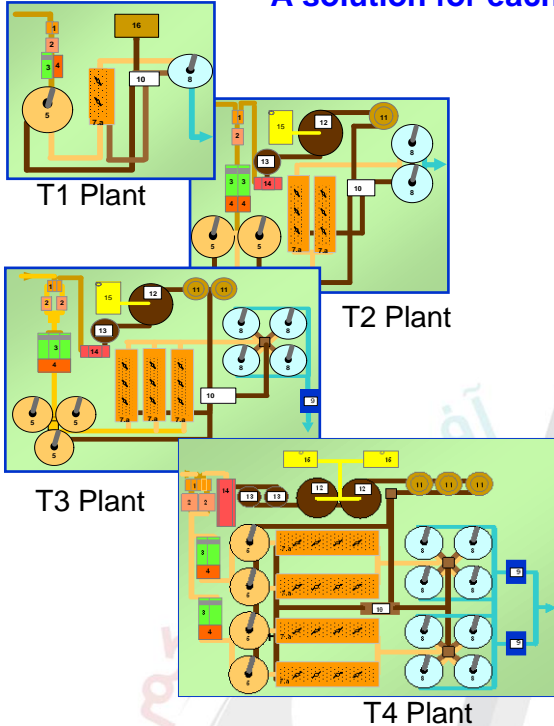
Tackle Tough Power Quality Problems By Drilling Down Into Successive Layers



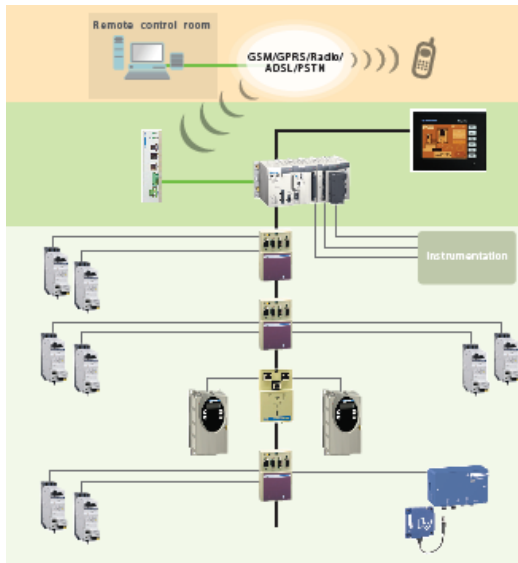
Sub-cycle transients, such as static transfer switching, can be captured by the CM4000 waveshape alarm. Additionally, POWERLOGIC monitors Time Stamp and capture successive layers of event data to "drill down" for increasing resolution needed to tackle tough power quality problems.

Many architectures are possible based on the situation

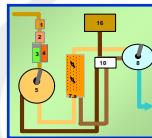


7.3. WWW (SOLUTIONS FOR WATER & WASTE WATER)**A solution for each plant**

- **T1 : Compact and autonomous plant**
 - Adapted treatment for low volume of water
- **T2 : Integrated plant**
 - Full and optimized treatment process
- **T3 : Flexible plant**
 - A modular solution that simplify expansion and revamping
- **T4 : A high performance plant**
 - Several process lines providing process availability

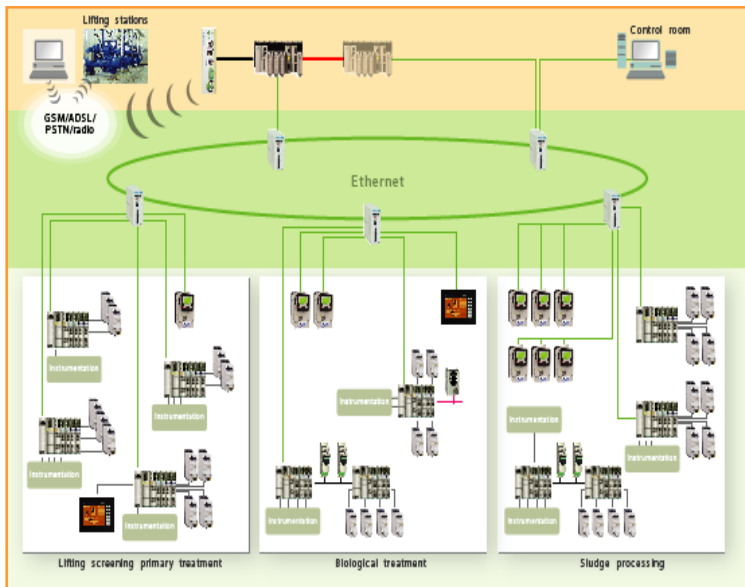
T1, A treatment plant for 5000 inhabitants

small drinking water treatment



- **An autonomous solution with operation cost reduction**
- **A compact and optimized solution**
 - All in one panel
- **No operation team on site**
 - Remote SCADA monitoring
- **One controller (low end or mid range), one RTU, one local HMI**
 - Motors starters and variable speed drives connected to CANopen or Modbus SL
 - Less than 200 I/O

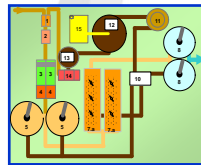
T2, A treatment plant for 50 000 inhabitants



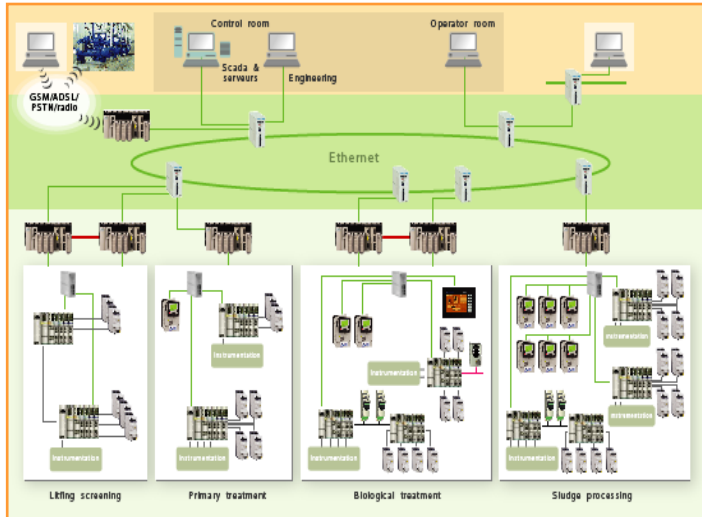
- An optimal integration with all treatment plant automation functions
- A maintenance cost reduction
- One Controller to manage all the plant
 - Less than 800 I/O
 - Dedicated automation island for each functional
 - Screening, clarifier, biological treatment, ..
 - Ethernet network to connect all the units



Wastewater plant



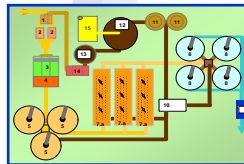
T3, A treatment plant for 200 000 inhabitants



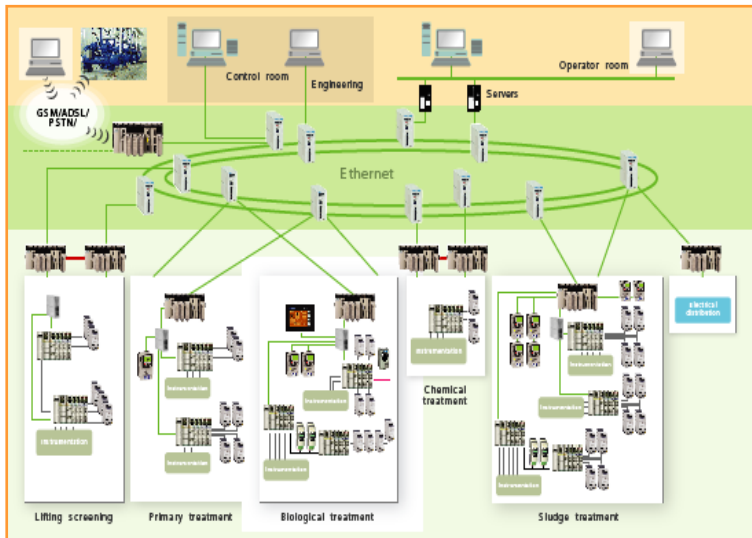
- A high level of flexibility that simply revamping and expansion
 - New clarifier to be added for instance
- Ease of diagnostic with high level of availability
 - Transparent Ready capabilities
- One controller for each functional unit
 - Around 5000 I/O
 - Simplicity of design and integration with Unity Application Generator and its object water library



Wastewater
for 200 000
m3/day

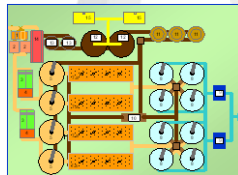


T4, A treatment plant for 1 million inhabitants



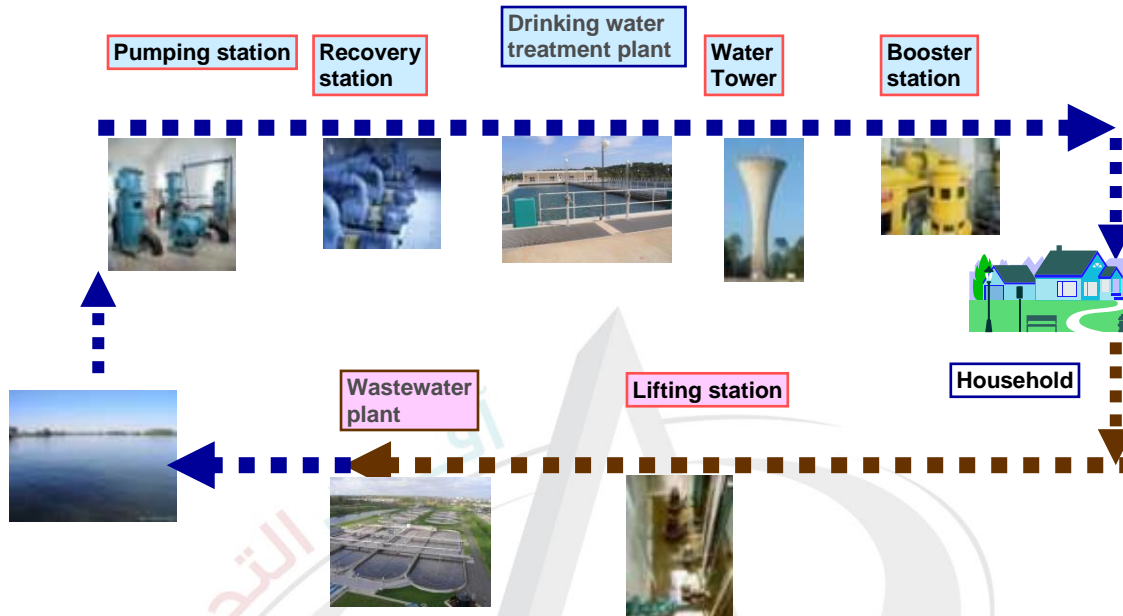
- **A high performance solution with process availability**
 - ☐ Network redundancy
 - ☐ SCADA servers redundancy (Vijeo Citect)
 - ☐ Hot standby PLCs
- **Several process lines**
 - ☐ Biological treatment process line for instance
- **One controller for each process line**
 - ☐ Around 10 000 I/O
 - ☐ Up 100 controllers, up to 1000 motors starters, drives

Advanced Water treatment



The remote sites in water treatment cycle

- A flexible and relevant solution linked to the complexity of the remote station application



7.4. TELEMETRY SYSTEMS

We offer a variety of components for SCADA (Supervisory Control and Data Acquisition) and Telemetry systems; from simple low-cost Remote Telemetry Units (RTUs) to intelligent PC compatible Controllers.

The telemetry systems consist on remote data acquisition and control.

One of the typical applications is for remote monitoring of wells, dams, rivers, tanks, etc... A remote Terminal Unit (RTU) will be installed for each remote site to collect data from different types of sensors (level, power quality, air quality, pressure, temperature, etc..). The data can be save locally and logged in the RTU and remotely accessible from the central SCADA system.

The data logger can transmits data to a Microsoft SQL database via the Internet using its built-in GPRS modem. Additionally, the data logger sends e-mails with attached csv formatted files and/or SMS messages with data and alarms.



7.5. BILLING SYSTEM



EasyBill

EasyBill is the simplest way to manage your tenants' utility bills. It is a complete software and hardware package to help people managing buildings with high-density tenants such as Business, residential towers, and shopping malls to process the electrical billing efficiently and much simpler than the traditional way. The system uses smart power meters and airflow sensors (BTU); fiber optic network RTUs with main data concentrator system with billing system will help to provide full billing information.

EasyBill system automates the tedious task of collecting the KWH readings from electricity meters, or BTU meters preparing the bills and managing the payments, it collects the consumption through a digital network connecting all the meters located near the tenant main breaker, the billing software manages the tenants such as adding and editing tenant information, generates the bills, and process the payments, helping to eliminate errors associated with manual process, and it saves time by performing the entire job automatically.

The digital network offers the maintenance staff the possibility to monitor real time electrical measurements such as: phase currents, Voltage, Active power, power factor and Demand.

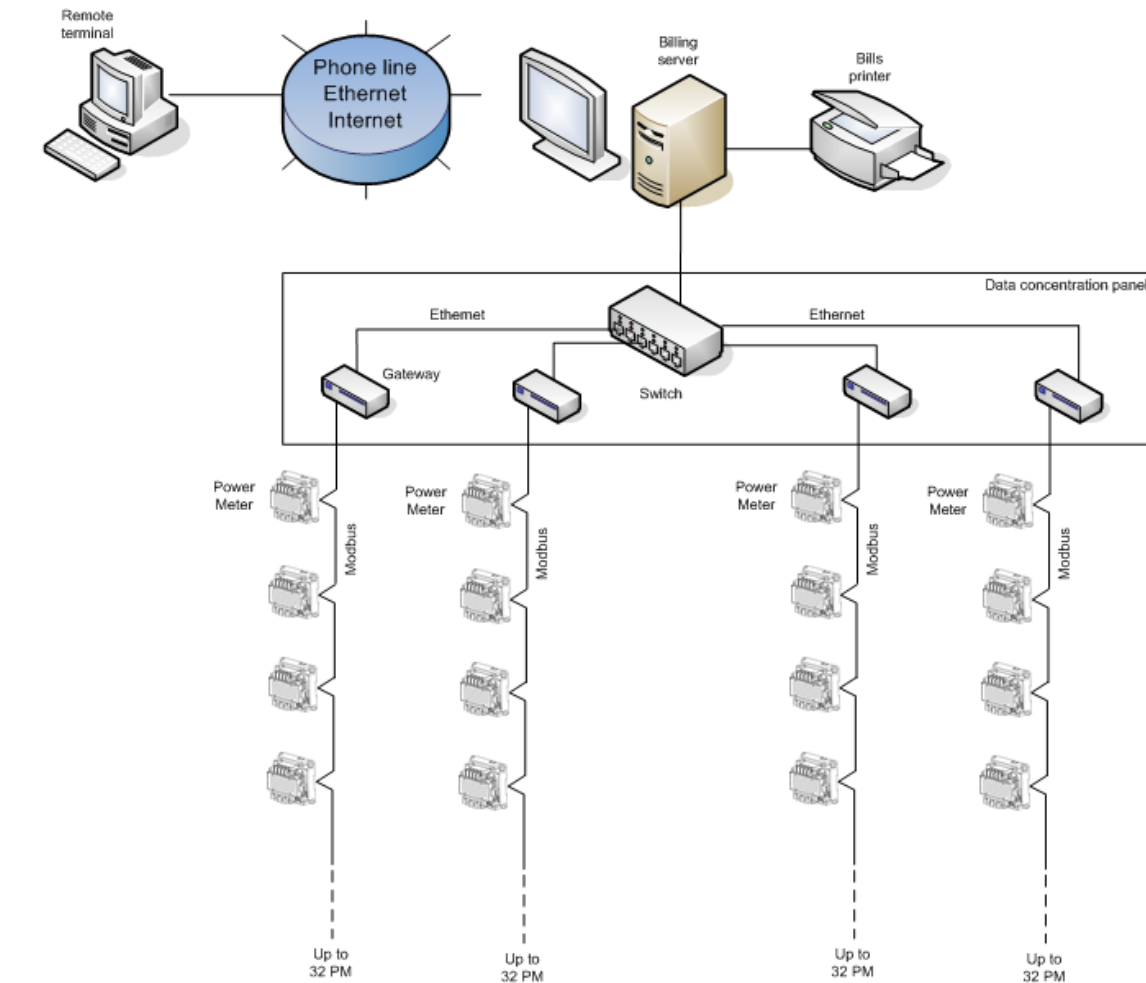
EasyBill gives the possibility to process other utility consumptions like water and BTU (cooling)

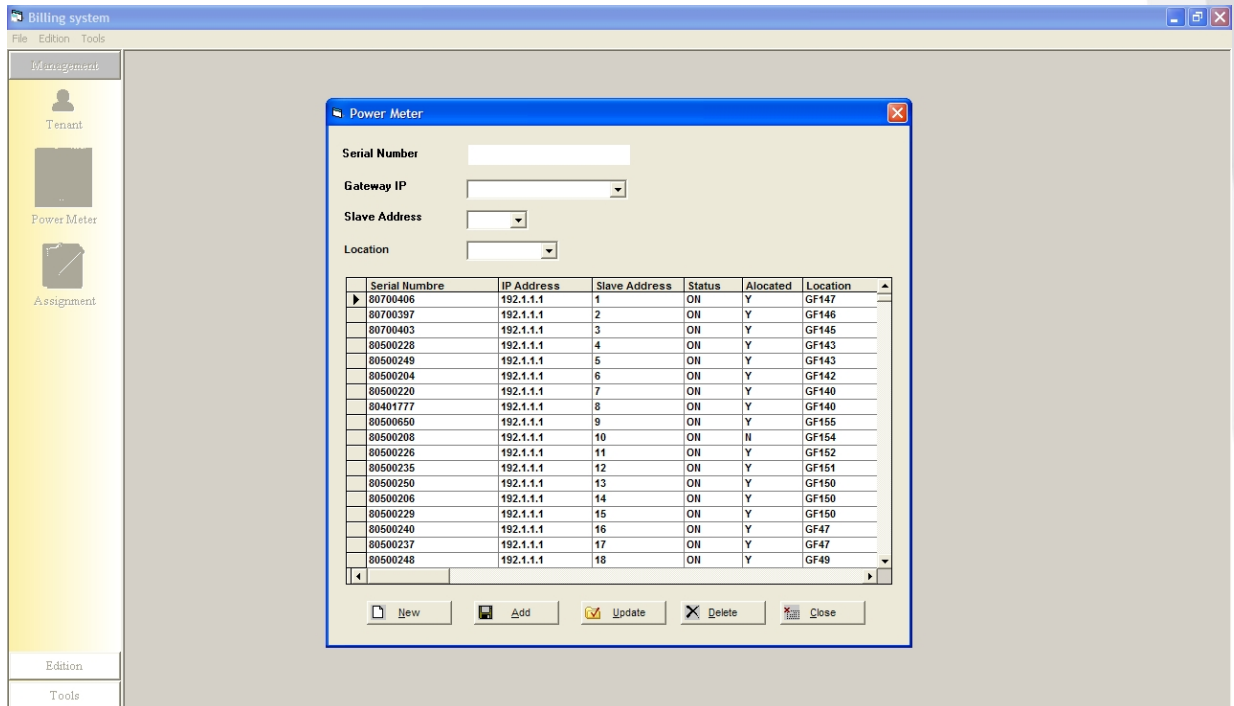
EasyBill can be implemented with busway distribution system as well as cable distribution.

The tenants, meters and bills information are stored in a database ready to interface with other applications, and offers remote access through dialup or LAN connections.

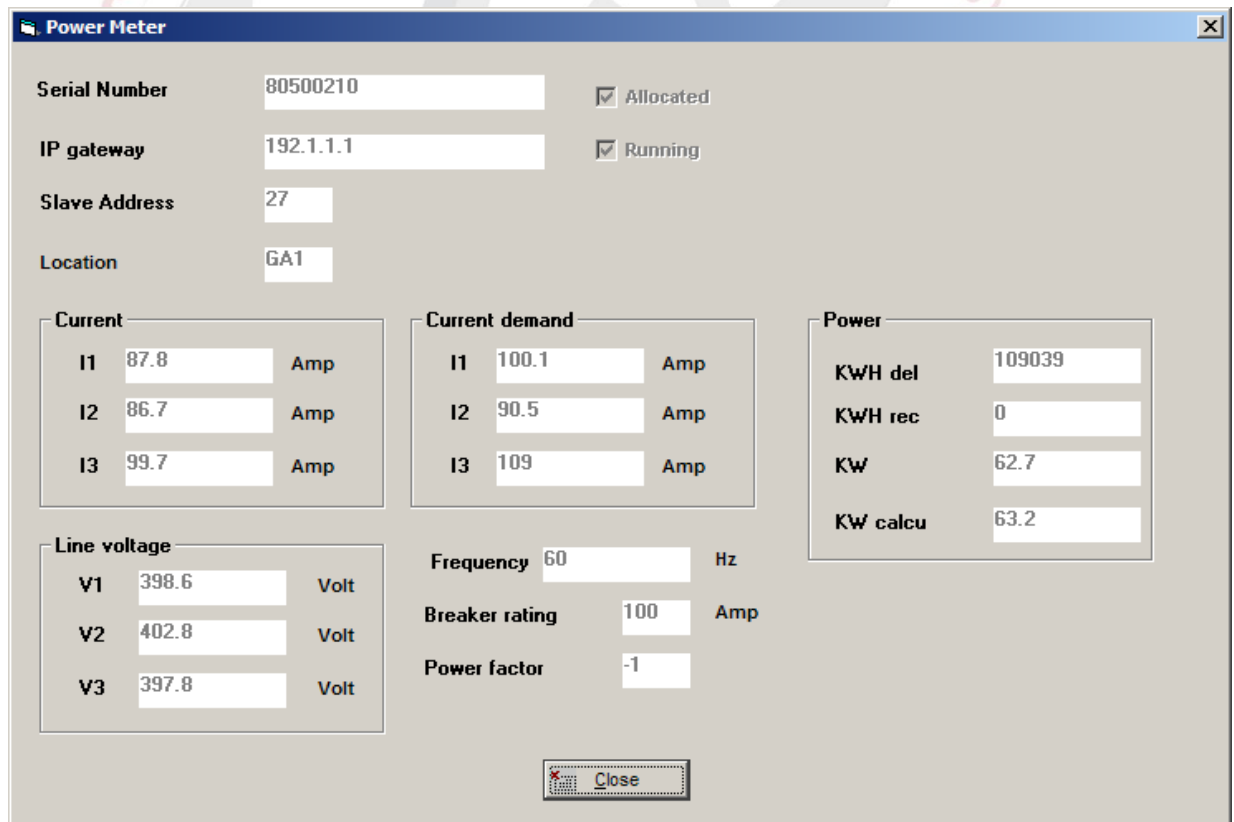
The ION6200 digital meter part of the solution is approved in CANADA as a revenue meter.

System Architecture





Billing software view



Real time measurements view



فاتورة استهلاك الكهرباء Services Invoice

Invoice No	39	رقم الفاتورة	Tenant Name	DEBENHAMS	أسم المستأجر
Period Start	01/11/2008	بداية الاستحقاق	Tenant Address	DEBENHAMS	اسم المعرض
Period End	02/10/2008	نهاية الاستحقاق	Store Name	GA1	رقم المعرض
Invoice Date	2008/29/11	تاريخ الفاتورة	Total Amount Due	60349.38	المبلغ المطلوب
Services Cutting Date	2008/09/12	تاريخ فصل الخدمة	Last Day For Payment	2008/14/12	آخر موعد للتسديد
Credit	0	رصيد دائن	Old Balance	0	رصيد سابق
Total Amount Due		60349.38		المبلغ المطلوب	

Invoice Received by:

اسم المستلم:

Signature:

التوقيع:

Received date:

تاريخ الاستلام:

فضلاً سداد المبلغ المطلوب منكم بإيداعه في حساب/ المراكز العربية في البنك/ سامبا حساب رقم / 1416839 وإعلامنا بالسداد. للمزيد من المعلومات يرجى الاتصال على إدارة المجمع 920009550 أو فاكس 02-6123100.

Kindly pay the due payable amount in timely manner by depositing it in the Account of ARABIAN CENTERS CO. At Bank SAMBA account number 1416839 and kindly inform us. For more Information please call Mall Management on Tel number 920009550 or Fax number 02-6123100.

Electrical bill example

8. MAJOR PROJECTS LIST

SL No.	PROJECT NAME	CLIENT/End User	PROCESS	DESCRIPTION	Location	Award date	End date	IO count	H/W	S/W
1	Makkah holly Haram CCMS	Saudi Binladin Group	Power	Circuit control and monitoring system (CCMS) for Haram medium voltage network. Full Automatic control and monitoring. Fault detection and isolation, automatic loop configuration, automatic switching from main to standby supply and vice versa.	Makkah	Nov-07	Aug-08	8,000	Schneider Quantum HSBY PLC, Hirschman Modbus Plus	Unity Pro PLC programming SW, Monitor Pro SCADA
2	Six Airports PES	KITS(Khodary)/GACA	Power	Automation System for Power and Emergency System for six domestic airports	Gurayat, Qassim, Qaissoumah, Wajeh, Jizan	Sept-18	Ongoing	3000	Schneider M340 PLC, Magelis HMI	Unity Pro PLC programming SW, VijeoDesigner
3	Sudair IC CMZ PLC	Retco	Water	PLC, drives and HMI for Sudair industrial City Pumping station	Sudair IC	Jun-18	Ongoing	500	Schneider M340 PLC, VFD and Magelis HMI	Unity Pro PLC programming SW, VijeoDesigner
4	King Faisal Specialist Hospital PMS	Al-Rashid Technology and Power	Power	Power Monitoring System (PMS) for King Faisal Hospital in Riyadh to monitor the power quality of the Hospital using Schneider PME Power Management System treating power quality such as Voltage dips, Voltage surges, Overvoltage, Harmonics, Power frequency	Riyadh	Mar-18	Ongoing	2,400	Schneider Micom P141, Ethernet Industrial switches, communication panels, Modbus/Ethernet Gateways, PMS Server	Schneider PME power monitoring software
5	North South Railway (NSR) EMMS System	Thales / SAR	Transport	EEMS (Electro Mechanical Management and Monitoring System) The EMMS allows the for the data acquisition and remote monitoring of 173 shelters related to NSR (North South Railway project. For All Locations i.e. Shelters with Dual Generator sets, Shelters with SEC power, Shelter with Solar power, S&T Building	Riyadh/ Qassim/ Jawf	Jan-18	Ongoing	15,000	Schneider Quantum PLCs and Twido RTUs	Unity Pro PLC programming SW, VijeoCitect SCADA, Twido Suit, Industrial Ethernet Modbus TCP/IP Fiber optic network

6	Zulfi SCADA, DSM, SOE Expansion	Thales / NGSA	Power	SCADA EXPANSIONS WORKS at S/S # 8812 and 9011 . DSM/SOE EXPANSIONS WORKS at S/S # 8812 and 9011	Zulfi (Riyadh Region)	Mar-17	On going	1,000	ABB 560 RTU	
7	Al-Aziziyah 132kv SS-9044	Thales / NGSA	Power	SCADA/DSM/SOE Expansion for S/S 8016 (3 feeders), S/S 8037(1 feeder), S/S 8038 (2 feeders) and S/S 8075 (2 feeders), S/S 8007 (2 feeders) and S/S 8128 (2 feeders). SAS Expansion Works for 3 feeders maximum list for S/S 8211 (1 or 2 Feeders) and S/S 8188 (1 feeder)	Riyadh	Sep-16	On going		ABB 560 RTU / GE SAS	
8	CCMS system for MOI NIC National Information Center) Riyadh	CAP France /MOI	Power	Circuit control and monitoring system (CCMS) for MOI National Information Center in Riyadh. Full Automatic control and monitoring. Fault detection and isolation, automatic switching from main to standby supply and vice versa. (Plus extensions)	Riyadh	Jul-13	Sep-15	2,000	Schneider M340 PLC, Industrial Ethernet, Modbus/Ethernet gateways	Unity Pro PLC programming SW, VijeoCitect SCADA
9	KSU CCMS System	VISION, SBG ABCD/ National Guard	Power	Circuit control and monitoring system (CCMS) for KSU in Riyadh (95 Substations), Jeddah (55 Substations) and Hasa (25 Substations) medium voltage network. Full Automatic control and monitoring. Fault detection and isolation, automatic loop configuration, automatic switching from main to standby supply and vice versa.	Riyadh/Jeddah/Hasa	Jun-10	Oct-14	25,000	Schneider 16 M340 PLCs, 175 Schneider Twido RTUs, 160 Connexion FO industrial Switches	Schneider M340 PLCs and Twido RTUs, Connexion FO industrial Switches
10	Royal Terminal Jeddah - CCMS	SBG RPD/ General Authority of Civil Aviation	Power	Circuit control and monitoring system (CCMS) for Royal Terminal Jeddah. Full Automatic control and monitoring. Fault detection and isolation, automatic loop configuration, automatic switching from main to standby supply and vice versa. M340 PLC system and VijeoCitect SCADA system with Twido RTUs	Jeddah	Nov-15	Oct-16	5,000	Schneider M340 PLCs and 10 Twido RTUs, Connexion FO industrial Switches	Schneider M340 PLCs and Twido RTUs, Connexion FO industrial Switches
11	KAUST PMS System	KAUST	Power	Power Monitoring System (PMS) for King Abdullah University of Science and Technology (KAUST) to monitor the power quality of the Campus using Schneider PME Power Management System PMS System treating power quality such as Voltage dips, Voltage surges, Overvoltage, Harmonics, Power frequency.	Jeddah	Jan-17	Jan-18	5,000	Schneider ION 7550 Ethernet Industrial switches, communication panels, Modbus/Ethernet	Schneider PME power monitoring software/ OsiSoft PI Server

									Gateways, PMS Server	
12	MOI General Security Building Mena CCMS	SBG ABCD/ MOI	Power	Circuit control and monitoring system (CCMS) for Mena MEKKAH Saudi Arabia MOI General Security Building for the control of medium voltage network. Full Automatic control and monitoring. Fault detection and isolation, automatic loop configuration, automatic switching from main to standby supply and vice versa. Hot Redundant PLC system and VijeoCitect SCADA system with Twido RTUs	Makkah	May-14	Oct-15		2 Premium Hot redundant PLCs, Twido 4 RTUs	Unity Pro PLC programming SW, VijeoCitect SCADA
13	Royal Palace Rawdah Riyadh-CCMS	SBG-ABCD	Power	Circuit control and monitoring system (CCMS) for the medium voltage network. Full Automatic control and monitoring. Load management, loops configuration, Faults detections and isolation	Riyadh	Oct-08	No v-09	1,500	Schneider premium PLCs and 11 Twido RTUs, Connexion FO industrial Switches	Unity Pro PLC programming SW, VijeoCitect SCADA
14	Makkah Holy Haram Massaa - CCMS	SBG-ABCD	Power	Integration of New Massa'a within the existing CCMS	Makkah	Oct-09	Jul-12	1,000	Schneider Quantum PLCs	Unity Pro PLC programming SW, Monitor Pro SCADA
15	Prince Khaled Al-Faisal Palace CCMS System (Obhor)	SBG - RPD	Power	Power management and Control SCADA. The system consist of Schneider Hot Redundant PLCs and SCADA servers to full monitor and control the electrical equipment (RMU, transformers, MDPs)	Obhor/Jeddah	Jan-15	Oct-15	1,500	Schneider Quantum Hot Redundant PLC, 4 Twido RTUs	Unity Pro PLC programming SW, Monitor Pro SCADA
16	Prince Bandar Palace CCMS System (Obhor)	Al-Rassim	Power	Power management and Control SCADA. The system consist of Schneider PLCs and SCADA server to full monitor and control the electrical equipment (RMU, transformers, MDPs)	Obhor/Jeddah	Sep-14	Dec-15	5,000	Schneider M340 PLCs and 12 Twido RTUs, Connexion FO industrial Switches	Unity Pro PLC programming SW, VijeoCitect SCADA

17	SCADA works associated with SS # 8715 and 8228	Thales, Al-Babtin/ SEC	Power	SCADA works associated with the interconnection of S/S # 8715 and 8228 into SEC-COA 132KV cable network	Qassim/ Riyadh	Feb-16	On going	10,000	ABB 569 RTUs	
18	SAS SCADA DSM FOR BSP 9007	Thales, AlFanar/ SEC	Power	SAS, SCADA and DSM associated with the interconnection of BSP S/S 9007 into SEC-COA involving S/S 8188, 8016, 8024, 8174, 8031, 8033, 8074, 8128, 8007, 9013 and 9027	Riyadh	Mar-15	Mar-18	3,500	ABB 569 RTUs / Siemens, GE and ABB SAS	
19	SCADA DSM SOE JUBA 9701	Thales, Al-Babtin/ SEC	Power	SCADA, DSM and SOE works associated with the interconnection of BSP S/S 9701 (Juba SS) into SEC-COA 132KV cable network	Juba	Jun-15	Jun-16	500	ABB 569 RTUs	
20	Marai Hail PPP S/S Medium Voltage SCADA	AL-SHARKA WI/ Al-Marai	Power	Medium Voltage Network SCADA system for Al-Marai PPP Plant hail. The system consist of Schneider Quantum PLCs and SCADA servers to full monitor and control the MV equipment CB, Generators, Transformers, etc..) and Monitoring of SEC BSP	Hail	Sep-14	Mar-16	5,000	Schneider Hot Standby Quantum and M340 PLCs , Connexion FO industrial Switches	Unity Pro PLC programming SW, VijeoCitect SCADA
21	MV SCADA System for KSU Extension	ARTAR	Power	Medium Voltage Network SCADA system for King Saud University Extension and Hospital. The system consist of Schneider Hot standby Quantum PLCs and SCADA servers to full monitor and control the MV equipment CB, ATS, Generators, transformers, etc..)	Riyadh	Oct-14	Jun-17	1,500	Schneider Hot Standby Quantum and M340 PLCs , Connexion FO industrial Switches	Unity Pro PLC programming SW, VijeoCitect SCADA
22	SCADA system for Aziziyah Jamarat Link (Mena/Mekkah)	SAPAC	Power	SCADA system for Aziziyah Jamarat link in Mena Holy Mekkah. The system consist of Schneider Hot Redundant PLCs and SCADA servers to full monitor and control the electrical equipment (RMU, transformers, MDPs, escalators, lighting panels, Exhaust fan control based on CO and visibility.	Makkah	Jul-13	Mar-15	5,000	Schneider Hot Standby Quantum and M340 PLCs , Connexion FO industrial Switches	Unity Pro PLC programming SW, VijeoCitect SCADA
23	Khalidiyah Race Track	INARA	Power	SCADA system for Khalidiyah Race Track Floodlighting System. Lighting Control, automatic Switching, data monitoring		Jun-08	Apr-09	1,500	Schneider M340 PLCs , Connexion FO industrial	Unity Pro PLC programming SW, VijeoCitect SCADA

									Switches	
24	Interlocking PLC System for Makkah Holy Mosque	Saudi Binladin Group	Power	Design, supply and installation of 4 PLC system to ensure the interlocking function for the MV loops at Makkah Holy Mosque						
25	Cristal SCADA upgrade-Yanbu	Cristal	Power	Upgrade of Cristal SCADA system to include Additional Switchgears.						
22	Makkah Haram MV MIMICs	SBG-ABCD	Power	MIMICs panels for Makkah Holy haram medium Voltage network						
23	Taif Correctional Facility CCMS	SBG-RPD/MOI	Power	CCMS (Circuit Control & Monitoring System) for Taif correctional facility. Main SCADA systems connected to one main hot standby PLC and 22 RTUs over Fiber Optic ring.	Taif	Jul-12	Aug-15	5,000	Schneider Hot Standby Quantum and M340 PLCs , Redundant SCADA servers, Connexion FO industrial Switches	Unity Pro PLC programming SW, VijeoCitect SCADA
24	Jeddah Correctional Facility CCMS	VISION/SBG ABCDSBG ABCD/MOI	Power	CCMS (Circuit Control & Monitoring System) for Jeddah correctional facility. Main SCADA systems connected to one main hot standby PLC and 22 RTUs over Fiber Optic ring.	Jeddah	Aug-12	Nov-16	5,000	Schneider Hot Standby Quantum and M340 PLCs , Redundant SCADA servers, Connexion FO industrial Switches	Unity Pro PLC programming SW, VijeoCitect SCADA
25	Riyadh Correctional Facility CCMS	VISION, SBG ABCD/MOI	Power	CCMS (Circuit Control & Monitoring System) for Riyadh correctional facility. Main SCADA systems connected to one main hot standby PLC and 22 RTUs over Fiber Optic ring.	Jeddah	Aug-12	Nov-16	5,000	Schneider Hot Standby Quantum and M340 PLCs , Redundant SCADA servers, Connexion FO	Unity Pro PLC programming SW, VijeoCitect SCADA

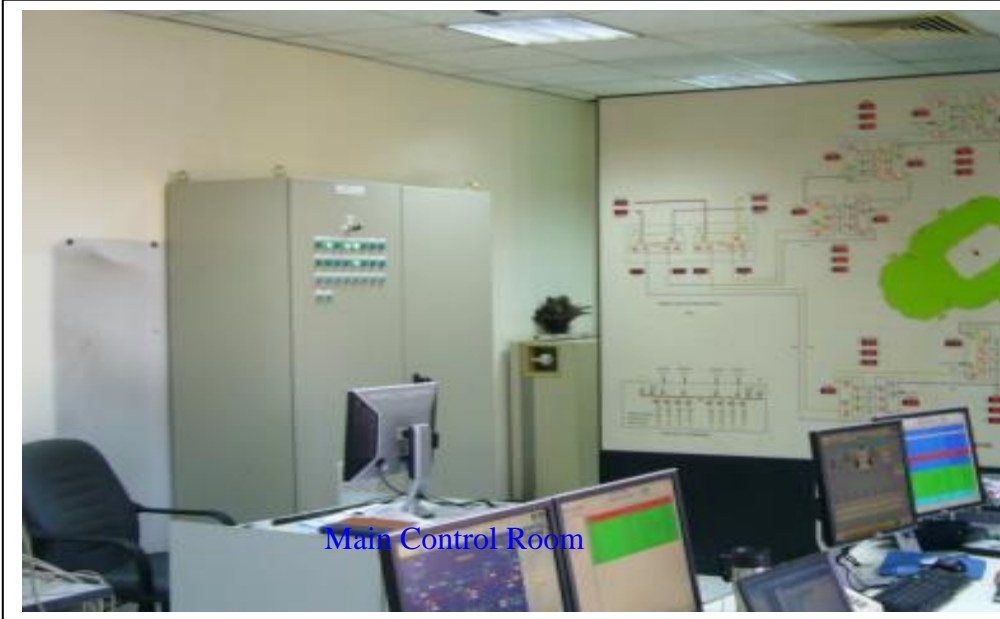
									industrial Switches	
26	Dammam Correctional Facility CCMS	UNISTAR, SBG ABCD/ MOI	Power	CCMS (Circuit Control & Monitoring System) for Riyadh correctional facility. Main SCADA systems connected to one main hot standby PLC and 22 RTUs over Fiber Optic ring.	Dammam	Jul-15	Ongoing	5,000	Schneider Hot Standby Quantum and M340 PLCs , Redundant SCADA servers, Connexium FO industrial Switches	Unity Pro PLC programming SW, VijeoCitect SCADA
27	R5 Compound MV SCADA System	Taameer	Power	SCADA system for R5 compound Riyadh including Main Schneider PLC for overall control and one SCADA station based on Schneider VijeoCitect SCADA	Riyadh	Apr-12	Ongoing	500	M340 PLCs , SCADA server, Connexium FO industrial Switches	Unity Pro PLC programming SW, VijeoCitect SCADA
28	Khalidiyah Palace CCMS (Jeddah)	SBG-RPD	Power	CCMS (Circuit Control & Monitoring System) for Khalidiyah Palace Jeddah. Two SCADA systems connected to one main PLC and 18 RTUs over Fiber Optic ring.	Jeddah	Nov-09	Oct-10	3,000	M340 PLCs , SCADA server, Connexium FO industrial Switches	Unity Pro PLC programming SW, VijeoCitect SCADA
29	Medina Palace CCMS system	SBG-RPD	Power	CCMS (Circuit Control & Monitoring System) for Medina Main Palace Two SCADA systems connected to one main PLC and 6 RTUs over Fiber Optic ring.	Madinah	Oct-10	Dec-11	1,500	M340 PLCs , Twido RTUs SCADA server, Connexium FO industrial Switches	Unity Pro PLC programming SW, VijeoCitect SCADA
31	Five CCMS systems for Ministry of Interior	SBG	Power	Circuit control and monitoring system for medium voltage network. Automatic control and monitoring, load shedding and load management for Ministry of Interior Security Buildings in Assir, Makkah, Dammam, Qassim and Al-Hair based on Unity Premium, Twido and VijeoCitect SCADA software	5 locations	Apr-11	Feb-13	1500/ site	Premium PLCs , Twido RTUs, SCADA server, Connexium FO industrial Switches	Unity Pro PLC programming SW, VijeoCitect SCADA

30	Lubref II Power management System (PMS)	Lubref (ARAMCO)	Power	Three SCADA PMS stations for Process, utilities and UPS, using the latest Schneider Electric Supervisory Control And Data Acquisition software Vijeo Citect	Yanbu	Jun-06	Oct-07	5,000	CM4000 (circuit controller) EGX gateways	Schneider Square-D SMS PMS software, Ethernet & Modbus networks fiber optic networks
31	Cristal Expansion Phase II	Cristal Arabia	Power	SCADA system for Cristal Pigment plant power distribution network to control and monitor the 34.5KV, 13.8KV, 4.16KV switchgears and MCCs. The system consists of central redundant SCADA servers, network server, data storage server. The central SCADA is connected over FO Ethernet TCP/IP network with five Sub-station automation systems based on PLC, Data concentrators, SCADA, Intelligent Electronic Relay (SEPAM, Power Meters).	Yanbu	Sep-08	Sep-10	20,000	Schneider Hot Standby Quantum, CN1000 Data concentrators, Connexium FO industrial Switches	Unity Pro PLC programming SW, Monitor Pro SCADA
31	Electrical Management System (EMS)	UDHE/GULF FARABI (SABIC)	Power	SCADA system for Gulf Farabi power distribution network to control and monitor the HV/MV/LV switchgears and VFD. The system consists on two SCADA stations, redundant Quantum PLCs, data concentrators, Intelligent Electronic Relays (SEPAM, LT6), VFD and power meters. All connected on FO Ethernet TCP/IP network and Modbus.	Jubail	Dec-05	Jun-06	8,000	Schneider Modicon Quantum Hot Standby PLC, CN1000 data concentrators, Momentum IO system, SPAMs	Monitor pro SCADA software. Modbus & Ethernet network, FO ring
32	Jarodiyah Water Transmission SCADA	Najm-ul-Jazira	Water	SCADA & Telemetry system for the water transmission Line at Jarodiyah- Dammam.	Jarodiyah	Mar-08	Jul-11	5,000	M340 PLCs, Twido RTUs SCADA server, Connexium FO industrial Switches	Unity Pro PLC programming SW, VijeoCitect SCADA
33	Wells Telemetry System	PSRCEWD Price Sultan Research Center For Environment Water	Water	Telemetry system and data loggers for remote wells monitoring. Remote connection by GSM/GPRS	Riyadh	May-10	Feb-11	6 Wells	DL/N KART070: Data logger	STS Water Manager

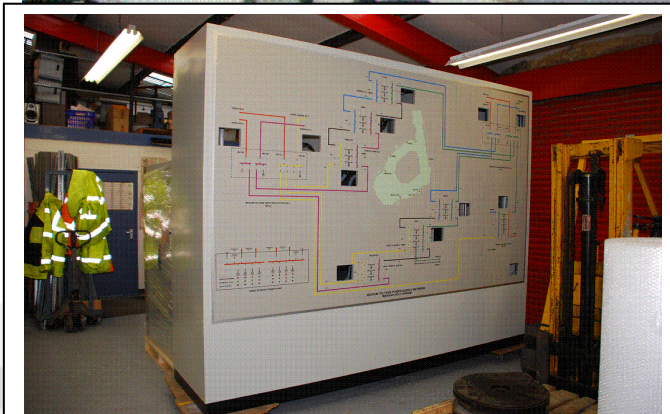
Automation Solutions Builders

		and Desert								
34	PP10 Automation System	BEMCO/Wetico/SEC	Water & Waste Water	Automation system for Drinking water, Demineralization, STP, Neutralization, Iron removal plants	Riyadh	Nov-09	Dec-11	3,000	Schneider Hot Standby Quantum PLCs with Magelis Industrial PCs	Unity Pro PLC programming SW, VijeoDesigner
35	Najran STP SCADA system	Wetico	Waste Water	SCADA System for Najran STP, Process control and monitoring.	Najran	May-10	Jan-11	2,000	Schneider Hot Standby Premium PLCs, Advantys IO system and SCADA server	Unity Pro PLC programming SW, VijeoCitect SCADA
36	Tabuk - WWTP, Phase II automation system	Xylem	Waste Water	Automation and control system for Tabuk - WWTP, Phase II with main control panel and five local control panels along with HMI.	Tabuk	Sep-12	Jan-13	800	Schneider M340 PLC with Magelis Industrial PCs	Unity Pro PLC programming SW, VijeoDesigner
37	AL_LAITH - WWTP, Phase II automation system	Xylem	Waste Water	Automation and control system for AL-LAITH - WWTP, full automated control system with HMI.	Al-Laith	Sep-12	May-13	700	Schneider M340 PLC with Magelis Industrial PCs	Unity Pro PLC programming SW, VijeoDesigner
38	Al-Kharj TTP	Al-Khorayef	Waste Water	SCADA system for Al-Kharj Tertiary Treatment Plant. 100.000 m3 Flow/day	Riyadh	Jun-09	Oct-11	1,500	2 Schneider Premium PLCs and 2 SCADA server	Unity Pro PLC programming SW, VijeoCitect SCADA
39	Doors Monitoring System	AL-Marai	Building	Doors monitoring system for Al-Marai Cradel Project for doors monitoring. A master Schneider PLC with Magelis HMI with AS-I bus network to interconnect all doors proximity sensors.	Riyadh/Kharj	Sep-10	Jun-12	1,500	Schneider M340 PLC with Magelis Industrial PCs	Unity Pro PLC programming SW, VijeoDesigner
40	Marai Water Tanks Levels Monitoring	AL-Marai/Almana	Water	2 PLC control Systems to monitor and control the levels in water tanks. Level probe communication through provirus	Hail	Nov-13	May-14	250	Schneider M340 PLC with Magelis Industrial PCs with Profibus	Unity Pro PLC programming SW, VijeoDesigner





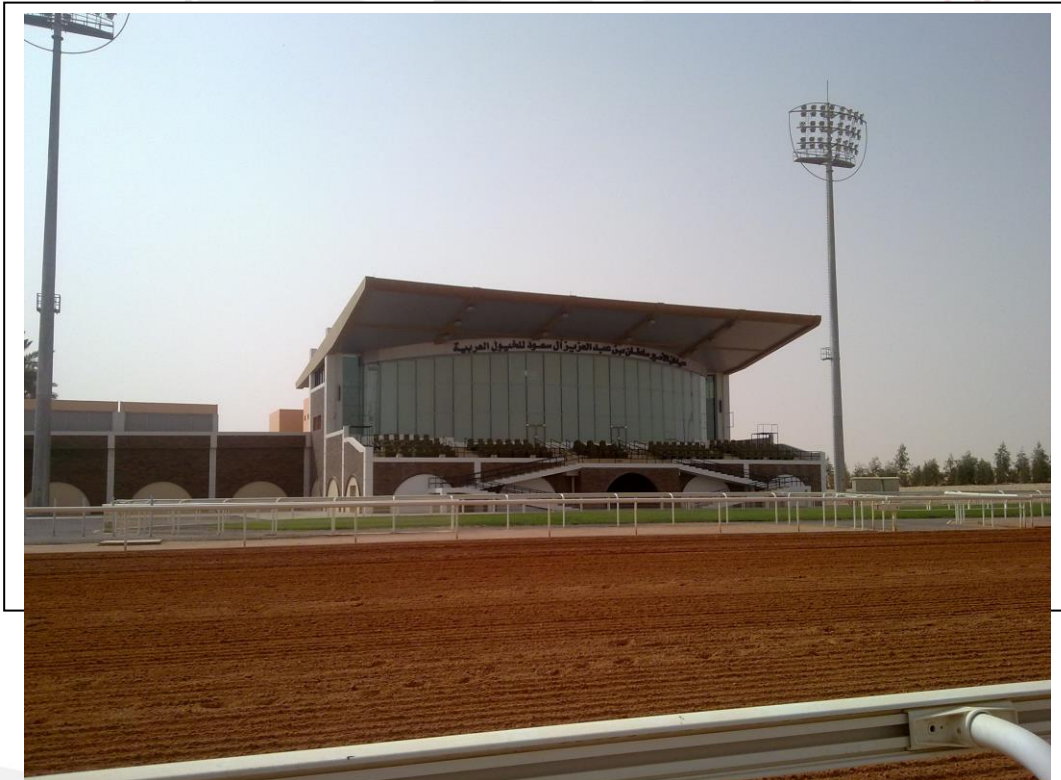
Makkah Holy
Haram Control
room

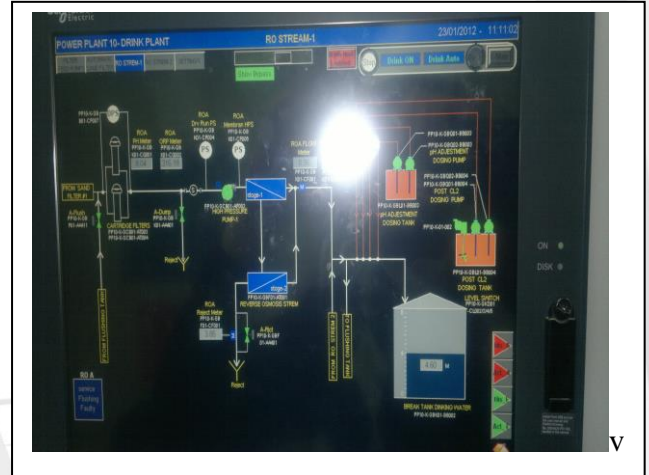


RTU unit



Floodlighting mast



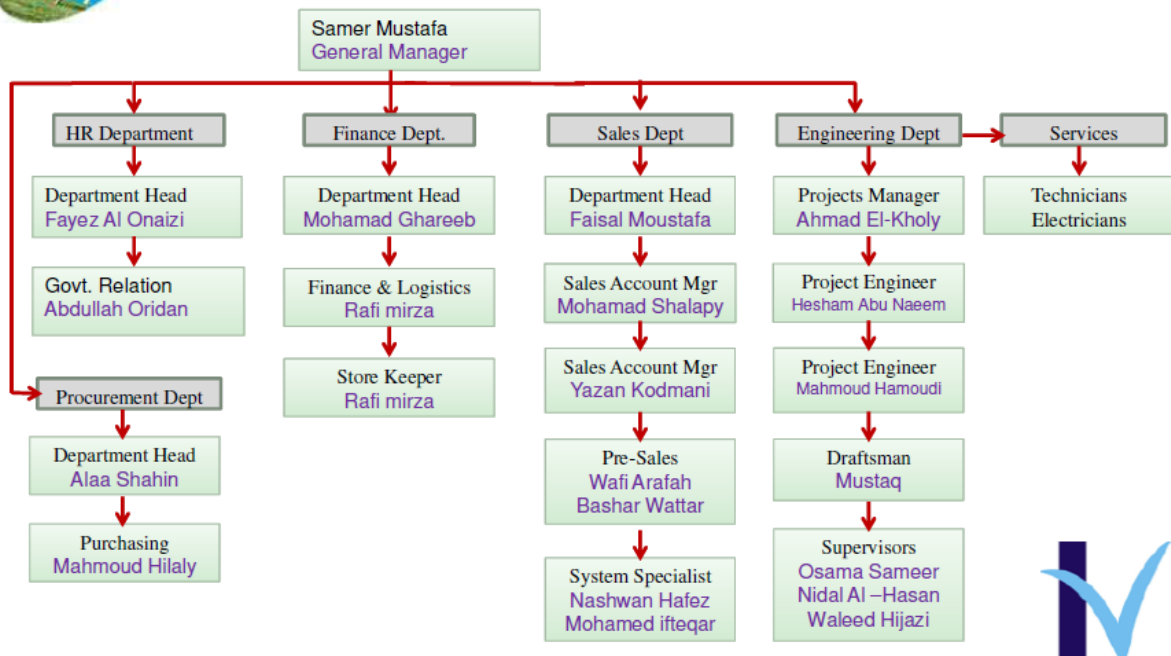


SEC Riyadh PP10 Demineralization and Water treatment plant

9. ORGANIZATION CHART

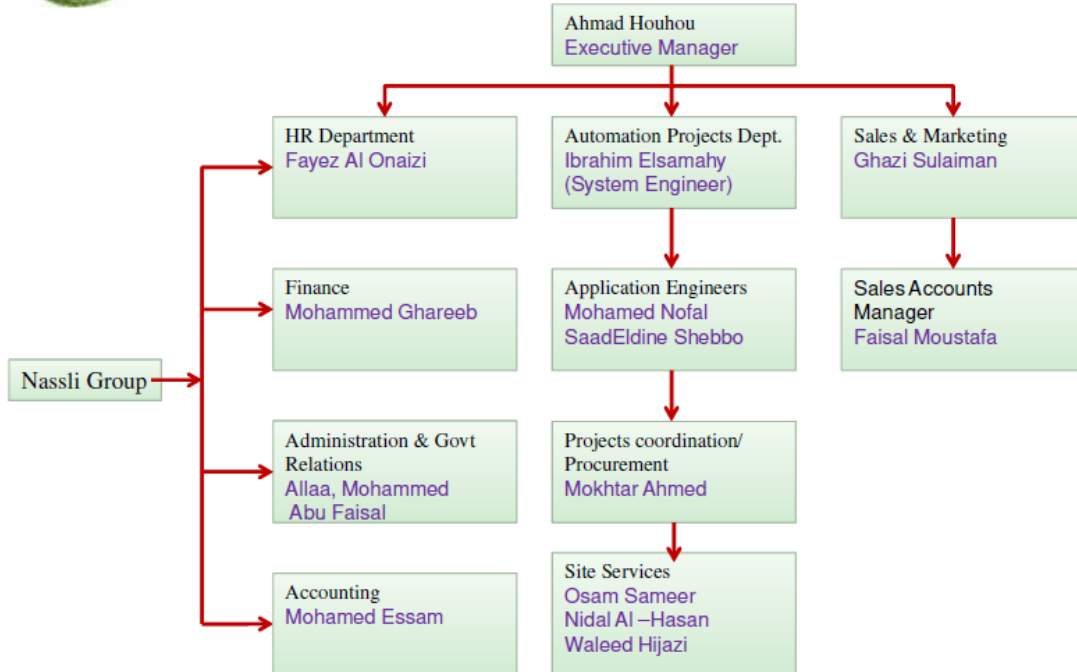


NASSLI ORGANIZATION CHART





AUTOMATION HORIZONS ORGANIZATION CHART



10. SCHNEIDER ALLIANCE CERTIFICATES

Schneider Electric

Alliance Integration Partnership Certificate

Automation Horizons

is a valued
Alliance Integration Partner with
Schneider Electric

Partnership number
SEAP1145SA

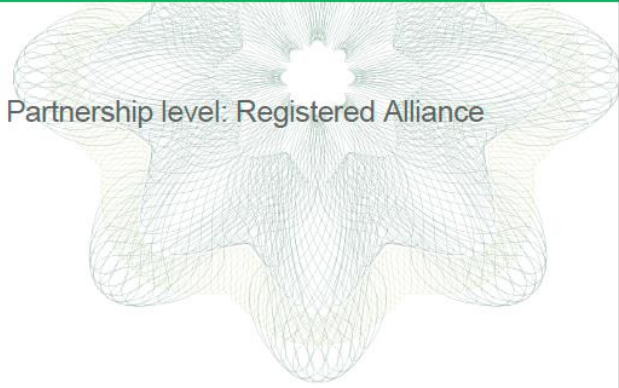
Valid through
November 30, 2018

Authorised by

Madiha Khalfi
System Integrator
Alliance Program Director



Partnership level: Registered Alliance



Life Is On

Alliance integration partner
with
Schneider
Electric

Life Is On

Schneider
ElectricSchneider Electric
Industry Business Unit

de / from : Mohammed Anwar Ibrahim
SI Channels, Software Director
tél : + 966.1 2912877 Ext 169
fax : + 966.1 4734013
mob : + 966.55 5298742
e-mail : mohammed.anwar@schneider-electric.com

date : May 6, 2018
n.réf. / o.ref. :

à / to : Whom it may concern

Attn :

tél :
fax :

pour info. / copy to :

objet / subject : Introduction Letter – Alliance Partner System Integrator
Automation Horizons

Schneider Electric Saudi Arabia is pleased to inform you that "Automation Horizon" is one of Schneider Electric business channels as Process Automation System Integrator, working in Saudi Arabia.

Schneider Electric and Automation Horizon are having a signed agreement on yearly basis; renewed in 2018, as **Schneider Electric Alliance Partner System Integrator**, by which Automation Horizon is getting the technical support and training from Schneider Electric to perform the process automation solutions based on Schneider Electric Process Automation Products.

On behalf of Schneider Electric, we'd like to thank you for your interest in Schneider Electric Products.



Schneider Electric Plants Saudi Arabia Co. LTD.

United Liability Co., Paid Up Capital 30,000,000 SAR., CR.No. 1010064609
License No. 101030083691, C.C 36462

شركة مصانع شتايدر اليكترويك العربية السعودية المحدودة

شركة ذات مسؤولية محدودة، رأس مالها ٣٠.٠٠٠.٠٠٠ ر.س. السجل التجاري : ١٠١٠٠٦١٦٠٩
ترخيص رقم ١٠١٠٣٠٠٨٣٦٩١، رقم المظبية : ٣٦٦٦٢

Riyadh (Head Office)
P.O.Box 69249
Riyadh 11662
Tel.: (011) 459 8000
Fax: (011) 265 1860

Jeddah
P.O.Box 116132
Jeddah 21312
Tel.: (012) 697 7723
Fax: (012) 697 3308

Al Khobar
P.O.Box 3789
Al Khobar 31952
Tel.: (013) 896 0910
Fax: (013) 896 0820

الجبور
ص.ب ٣٧٨٩
الجبور ٣١٩٥٢
هاتف : ٨٩٦-٠٩١٠ (٠١٣)
فاكس : ٨٩٦-٠٨٢٠ (٠١٣)

جدة
ص.ب ١١٦١٣٢
جدة ٢١٣١٢
هاتف : ٦٩٧٧٧٢٣ (٠١٢)
فاكس : ٦٩٧٣٣٠٨ (٠١٢)

الرياض (المكتب الرئيسي)
ص.ب ٨٩٢٤٩
الرياض ١١٦٦٢
هاتف : ٤٥٩٨٠٠٠ (٠١١)
فاكس : ٢٦٥١٨٦٠ (٠١١)

11. CHAMBER OF COMMERCE REGISTER

الرقم: ١٠١٠٢٣٠٥٧٣

التاريخ: ١٤٢٨/٠٣/١٣

شهادة تسجيل فرع مؤسسة

وزارة التجارة والاستثمار
Ministry of Commerce and Investment

اسم التاجر: مجد مصطفى محي الدين عرفه

رقم السجل المدني / بطاقة الأحوال: ٠٠١٠٢١٠١١٢٦

المركز الرئيسي: الرياض - حي الملز - شارع صلاح الدين

ص.ب: ٠٢٥٣٢٠ الرمز البريدي: ١١٤٦٦

رقم سجل المركز الرئيسي: ١٠١٠١٩٨٩٥٤

الاسم التجاري للفرع: مؤسسه افاق التحكم للتجارة

العنوان: الرياض العروبه شارع الهندس ابراهيم العنقري

ص.ب: ٠٤٠٩١٥ الرمز البريدي: ١١٥١١

النشاط: استيراد وتجاره الجملة والتجزئه في الاجهزه الاكهربائيه والالكترونيه وقطع غيارها وصيانتها

رأس المال: ٢٥٠٠٠ خمسة و عشرون ألف ريال فقط لا غير

اسم المدير أو الوكيل المفوض: مجد مصطفى محي الدين عرفه

الجنسية: سعودي

تاريخ الميلاد: ١٤٠٠

مصدره: الرياض

تاريخه: ١٤٢٤/٠٦/٠٧

رقم السجل المدني - الإقامة: ٠٠١٠٢١٠١١٢٦

سلطات المدير

يشهد مكتب السجل التجاري بمدينة الرياض

بأنه تم تسجيل هذه المؤسسة بسجل مدينة الرياض

وننتهي صلاحية الشهادة في ١٤٤١/٠١/٠٣ بموجب الإيصال رقم: ٠٠٢٨٩٠٩٠ و تاريخ: ١٤٣٣/٠٥/١٦

مدير السجل التجاري: نايف صالح الطاسان

التوقيع:



الختم

يمكنك التحقق من صحة هذه الشهادة بالدخول على <http://v.mci.gov.sa> To Verify the information of this certificate visit

12. ZAKAT CERTIFICATE



رقم الشهادة : ١٠٢٠١٨٧٥٨٤
التاريخ : ١٤٣٩/٠٣/٢٢ هـ
الرقم المميز : ٣٠٠٠٢٢٠٤٩٨



الهيئة العامة للزكاة والدخل
GENERAL AUTHORITY OF ZAKAT & TAX
فرع الرياض
شهادة
CERTIFICATE



المملكة العربية السعودية
الهيئة العامة للزكاة والدخل
GENERAL AUTHORITY OF ZAKAT & TAX
(١٨٥)

تشهد الهيئة العامة للزكاة والدخل بأن المكلف / مؤسسة نسلي للتجارة
سجل مدني رقم ١٠٢١٠٠١١٢٦ وسجل تجاري رقم ١٠١٠١٩٨٩٥٤ رخصة رقم ٣٧٢٩
قدم إقراره عن الفترة المنتهية في ١٤٣٨/١٢/٢٩ هـ
وقد منح هذه الشهادة لتمكينه من إنهاء جميع معاملاته بما في ذلك صرف مستحقاته النهائية عن العقود.
يسري مفعول هذه الشهادة حتى تاريخ ١٤٤٠/٠٤/٢٩ هـ الموافق ٢٠١٩/٠١/٠٥ م.
(التاسع والعشرون من ربيع الثاني ألف و أربعمائة و أربعون هجري)
الفروع (٣) في النموذج المرفق

الهيئة العامة
للزكاة والدخل
GENERAL AUTHORITY
OF ZAKAT & TAX
الشهادات

الختم الرسمي

هذه الوثيقة مستخرجة من النظام الآلي ولا تحتاج إلى توقيع
لا يعتد بهذه الشهادة إلا بعد التحقق من موقع الهيئة www.gazt.gov.sa



رقم الشهادة : ١٠٢٠١٨٧٥٨٤

التاريخ : ١٤٣٩/٠٣/٢٢ هـ

الرقم المميز : ٣٠٠٠٢٢٠٤٩٨

الهيئة العامة للزكاة والدخل
GENERAL AUTHORITY OF ZAKAT & TAXGENERAL AUTHORITY OF ZAKAT & TAX
(١٨٥)فرع الرياض
شهادة
CERTIFICATE

صفحة رقم : ١

قائمة فروع المكلف مؤسسة نسلي للتجارة

وسجل تجاري رقم ١٠١٠١٩٨٩٥٤ رخصة رقم ٣٧٢٩

رقم السجل	الرخصة	إسم الفرع	المدينة
١٠١٠٢٧٨٢٧٩	٢٩٣٧	مؤسسة حلول البيوت الذكية للمقاولات	الرياض
١٠١٠٢٣٠٥٧٣	٢٠١٤٧	مؤسسة آفاق التحكم للتجارة	الرياض
١٠١٠٣٢٨٨٨٤	٤٧٢٠١	مصنع نسلي للصناعات الكهربائية	الرياض

هذه الوثيقة مستخرجة من النظام الآلي ولا تحتاج إلى توقيع

لا يعتد بهذه الشهادة إلا بعد التحقق من موقع الهيئة www.gazt.gov.sa